

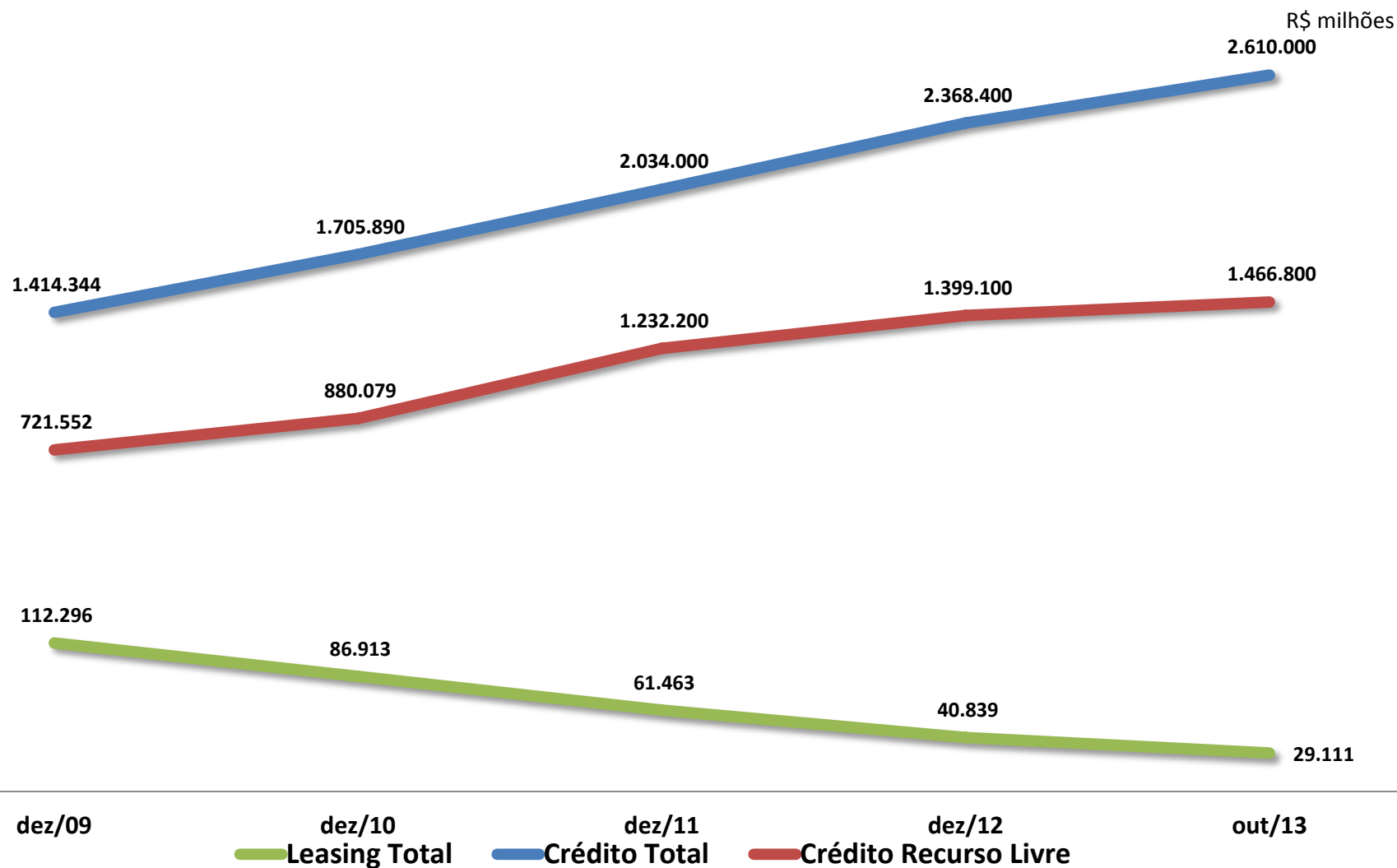
# LEASING

Informações Estatísticas Outubro/2013



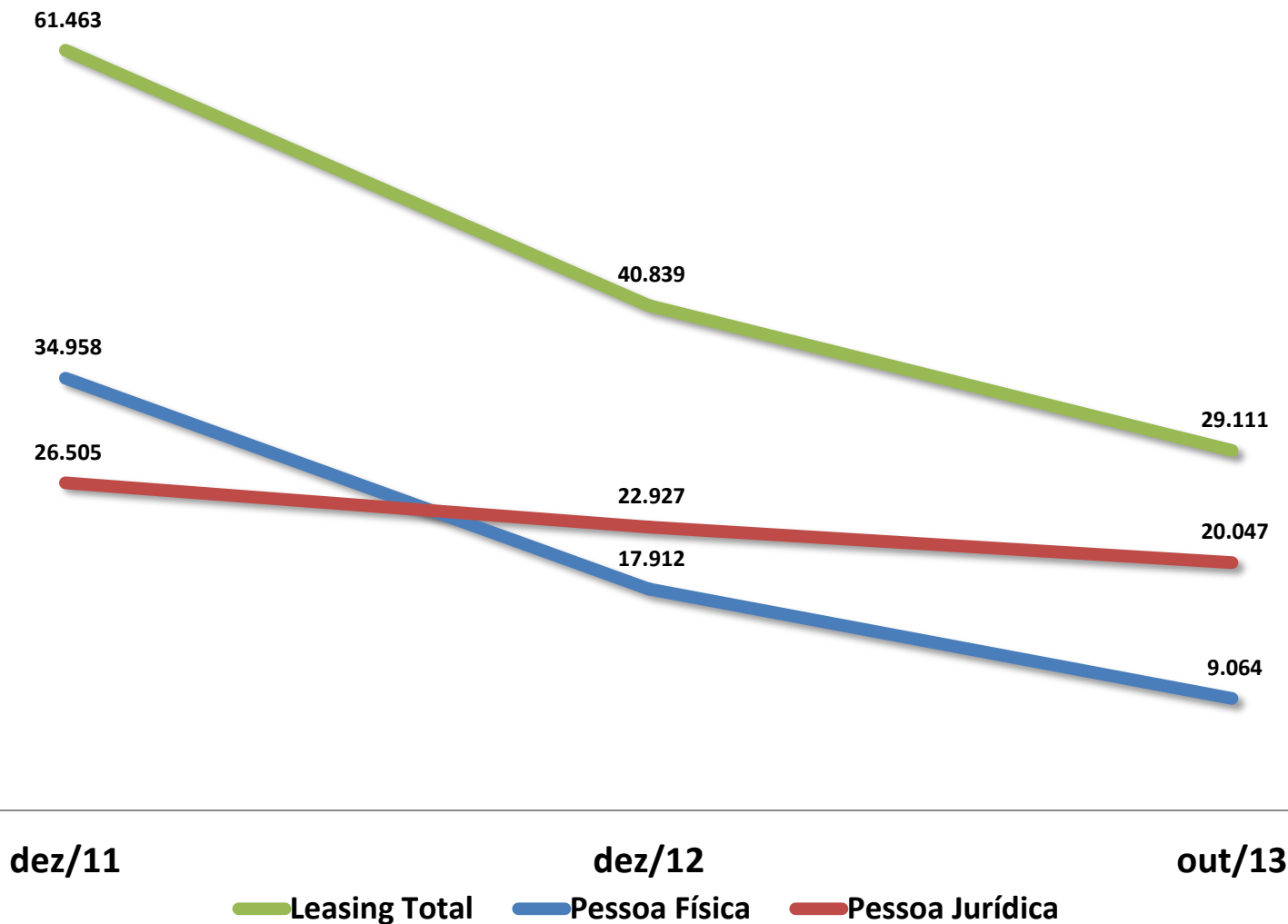
**abel**  
ASSOCIAÇÃO BRASILEIRA  
DAS EMPRESAS DE LEASING

# Crédito Total - Contexto



Fonte: BCB

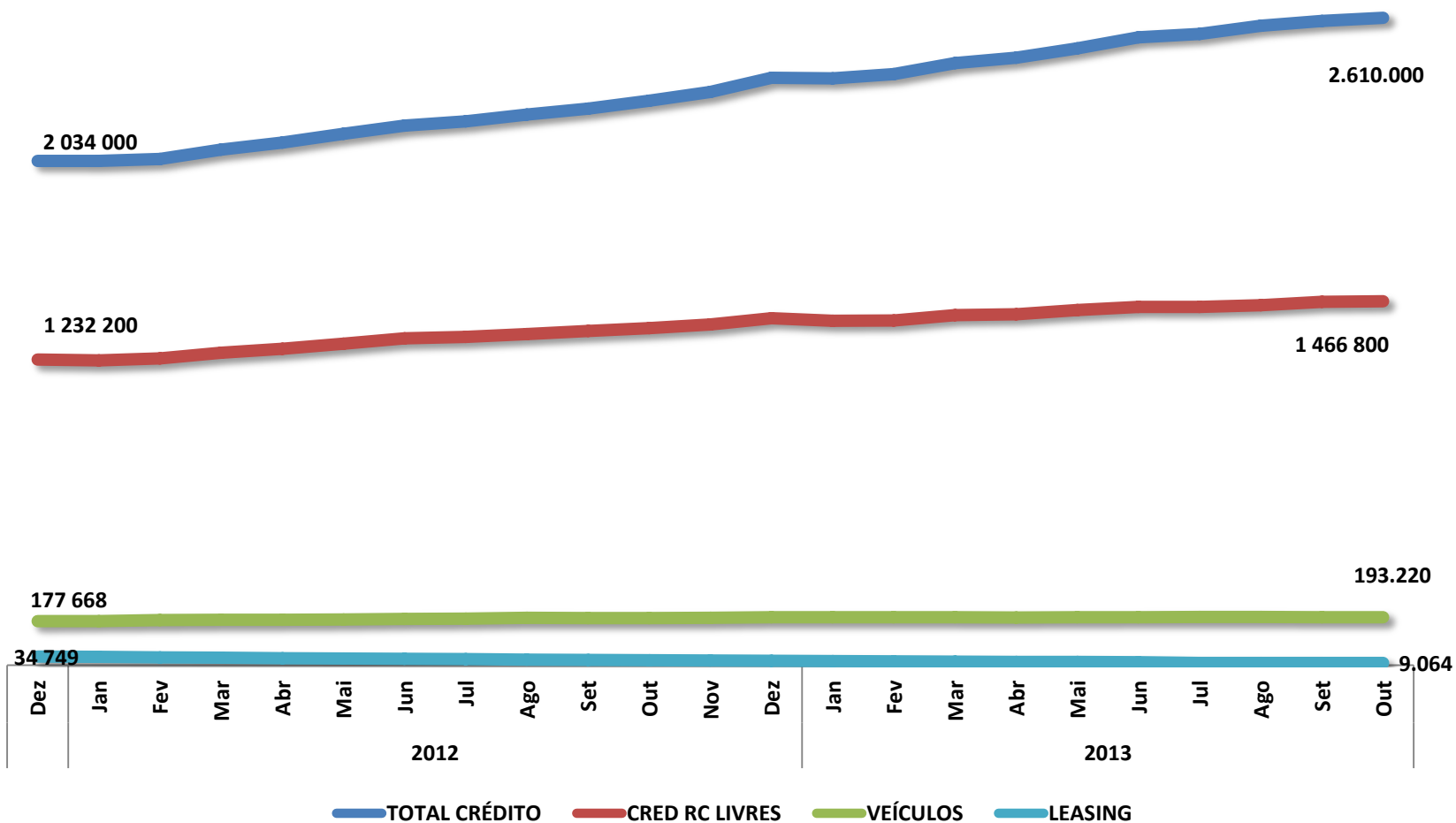
R\$ milhões



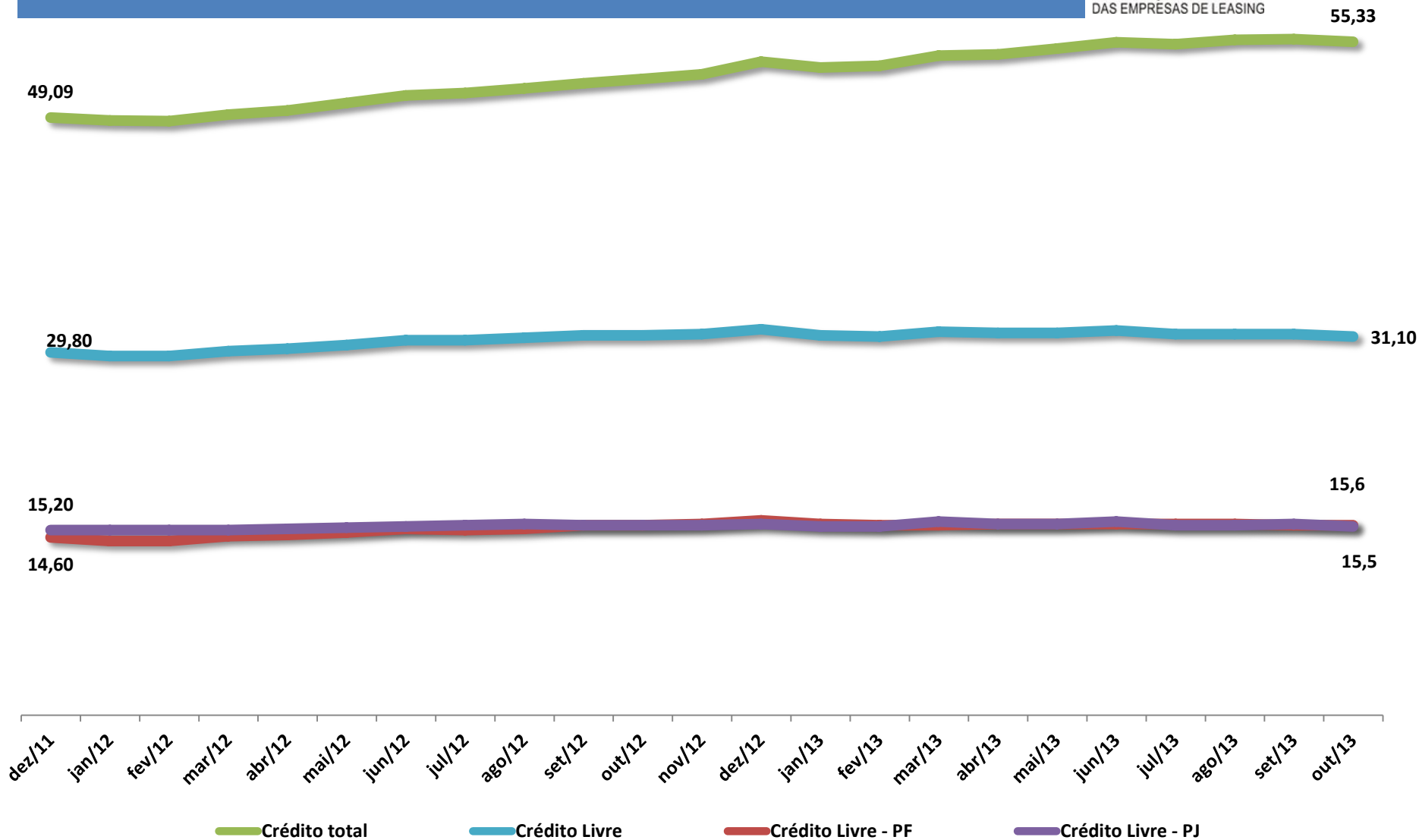
Fonte: BCB

# Crédito - Evolução por Tipo de Negócio

R\$ milhões

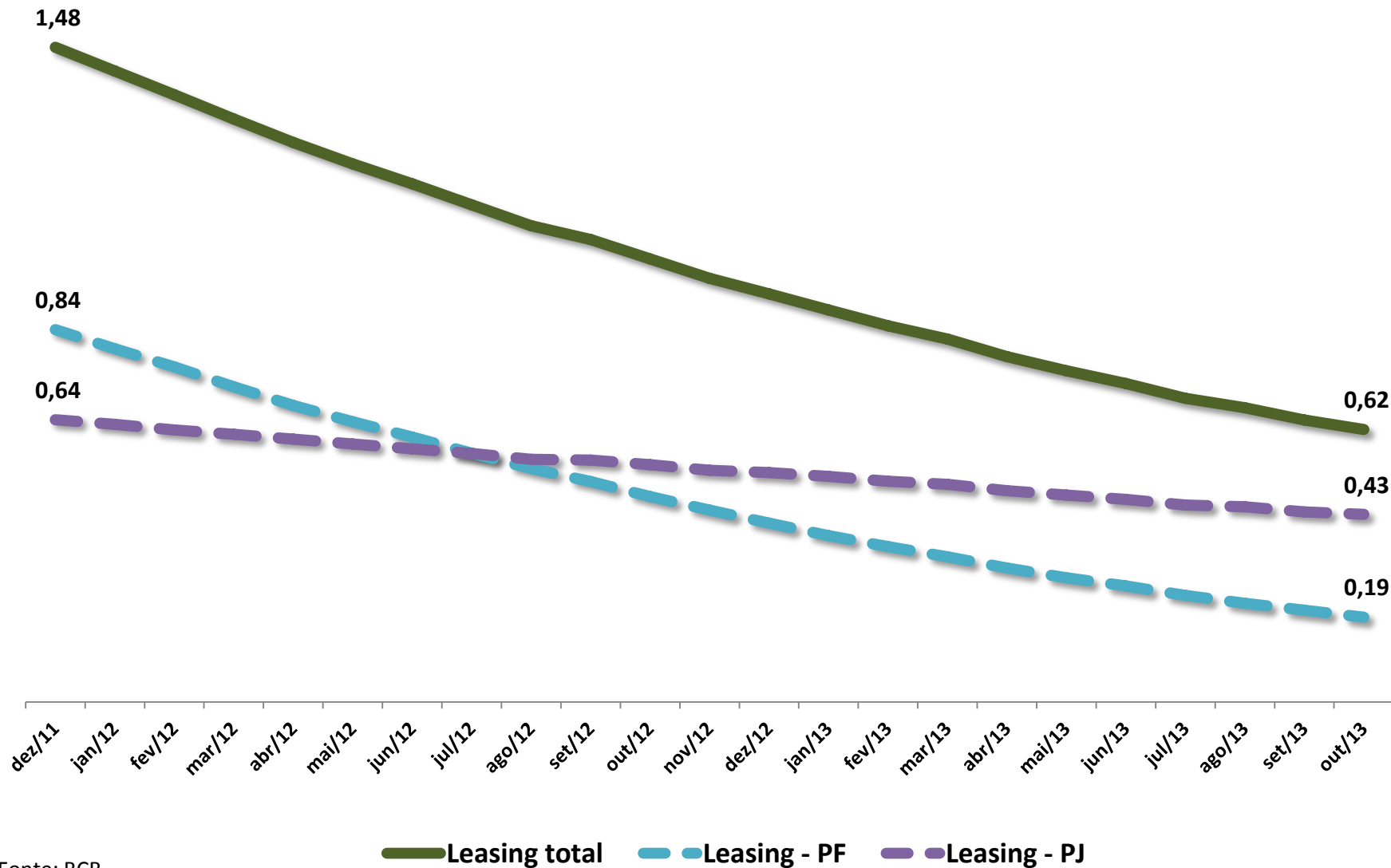


# Crédito - Participação no PIB



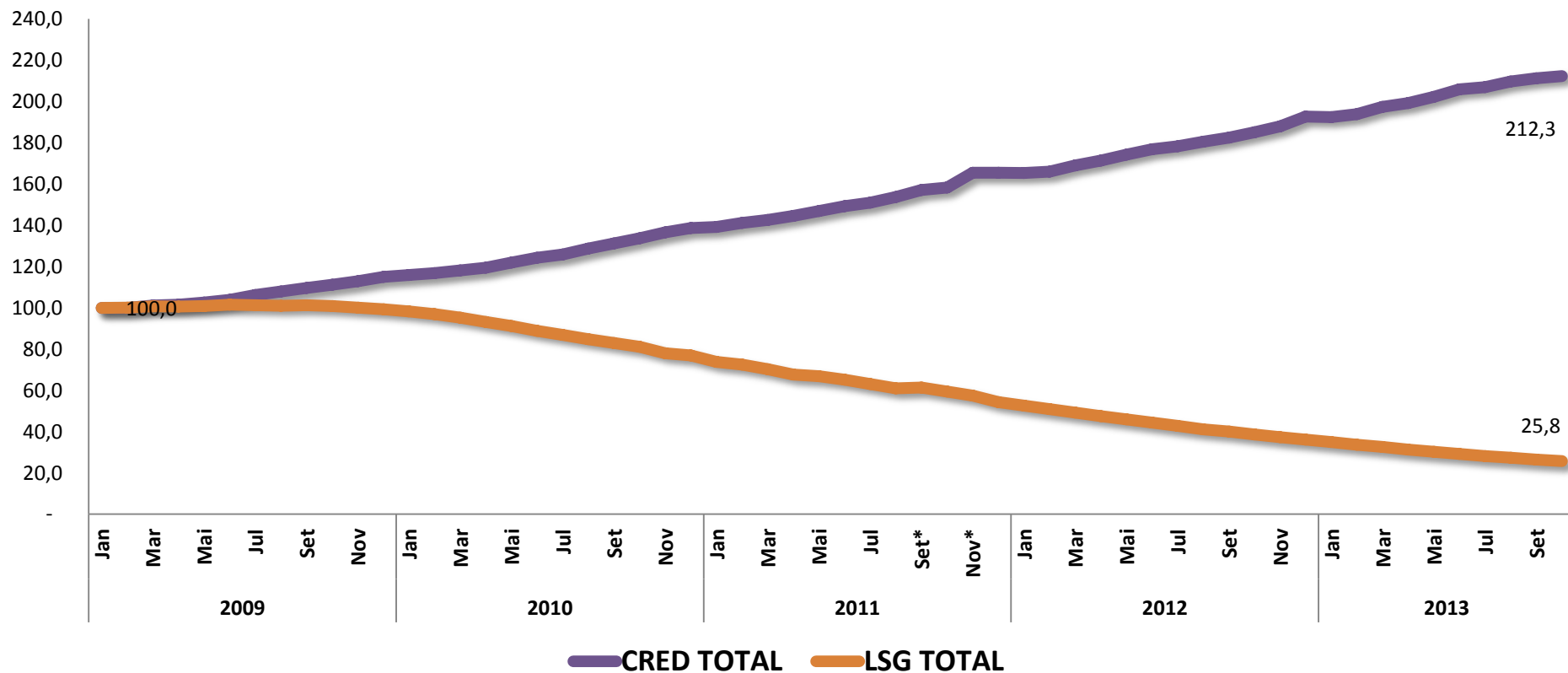
Fonte: BCB

# Leasing - Participação no PIB ( % )



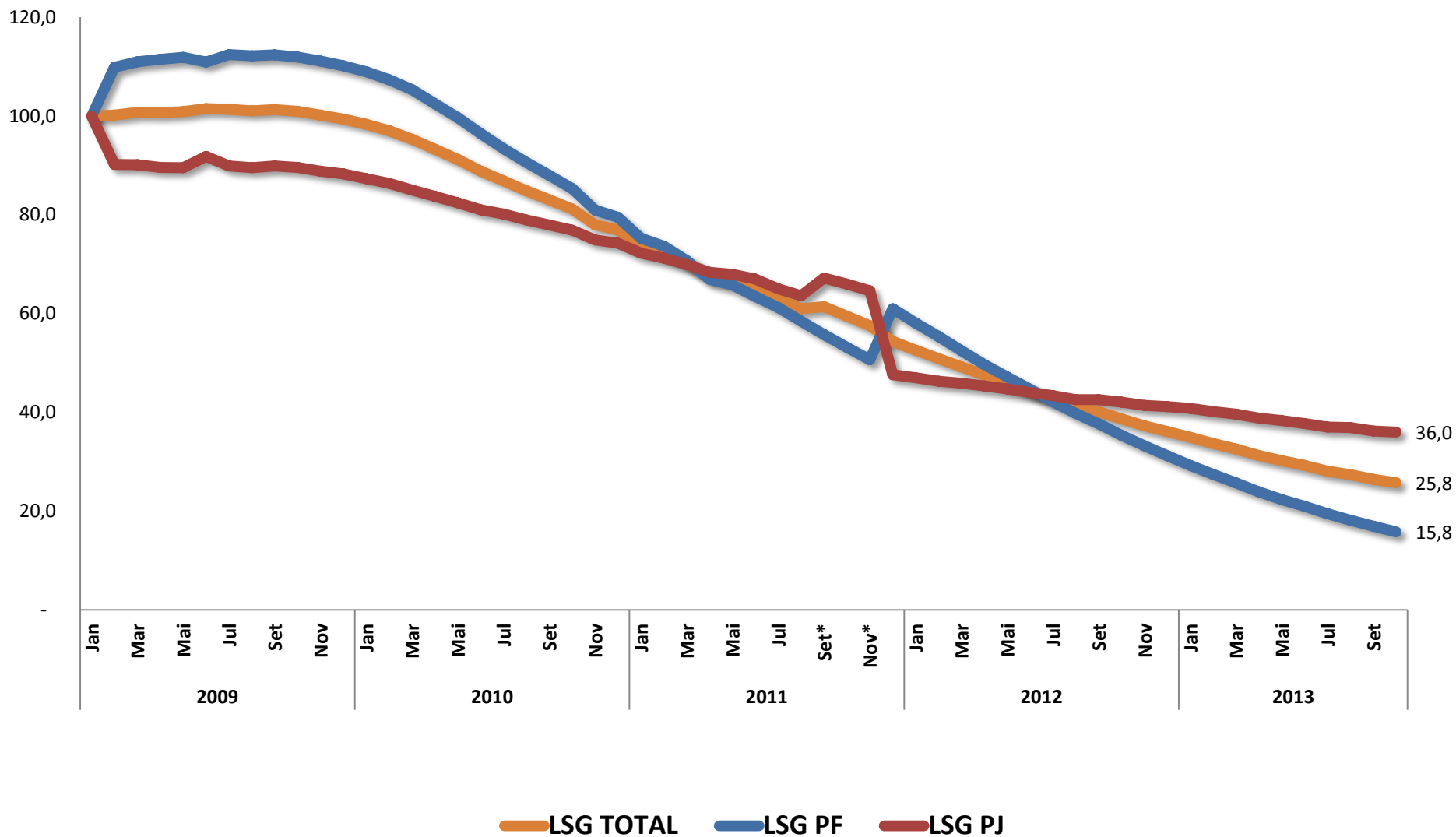
Fonte: BCB

# Crédito - Evolução (Jan/2009 = 100)



Fonte: BCB

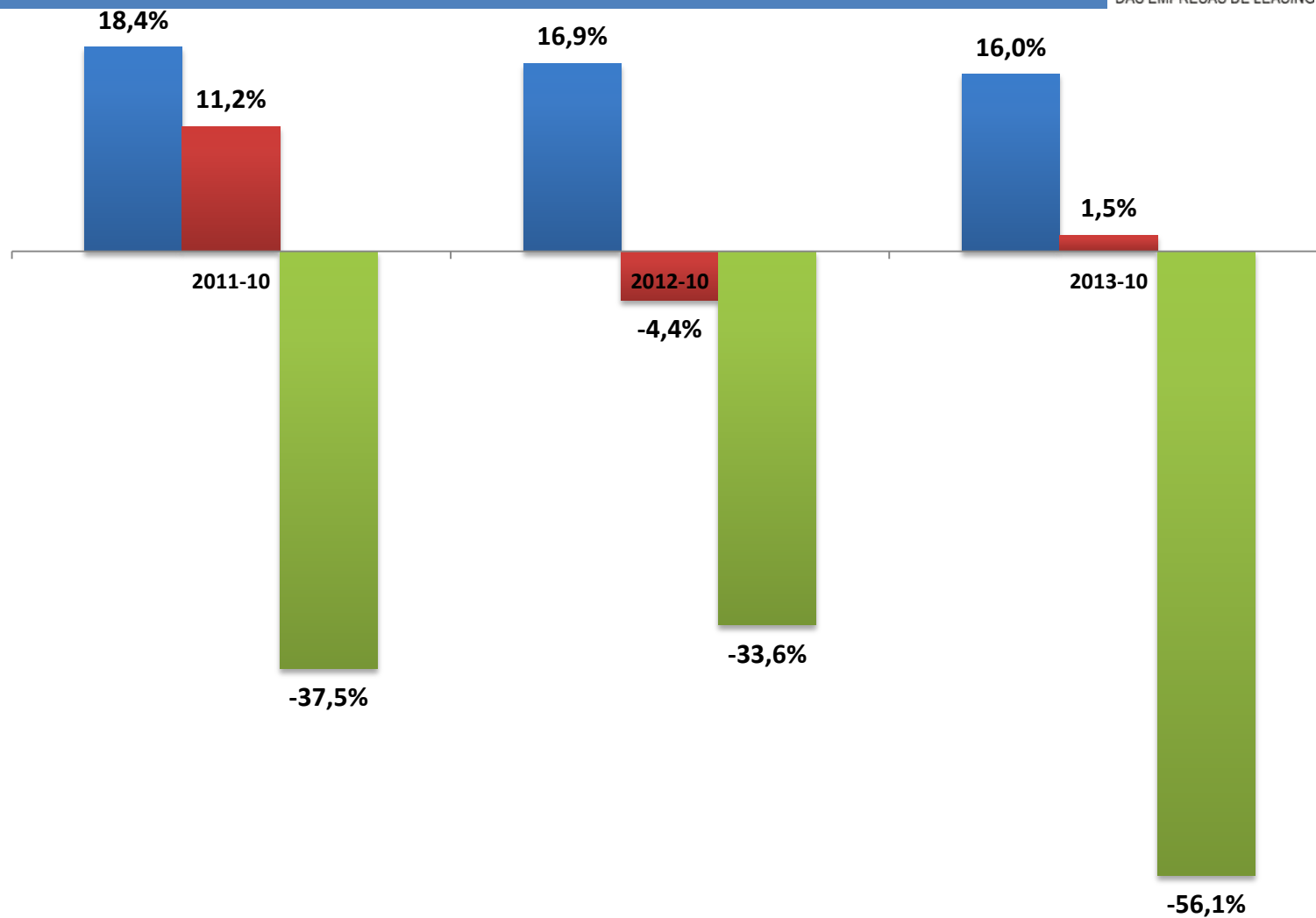
# Leasing – Evolução por Tipo de Pessoa (Jan/2009 = 100)



Fonte: BCB



## Crédito - Total, Veículos e Leasing (Var. % 12 meses)

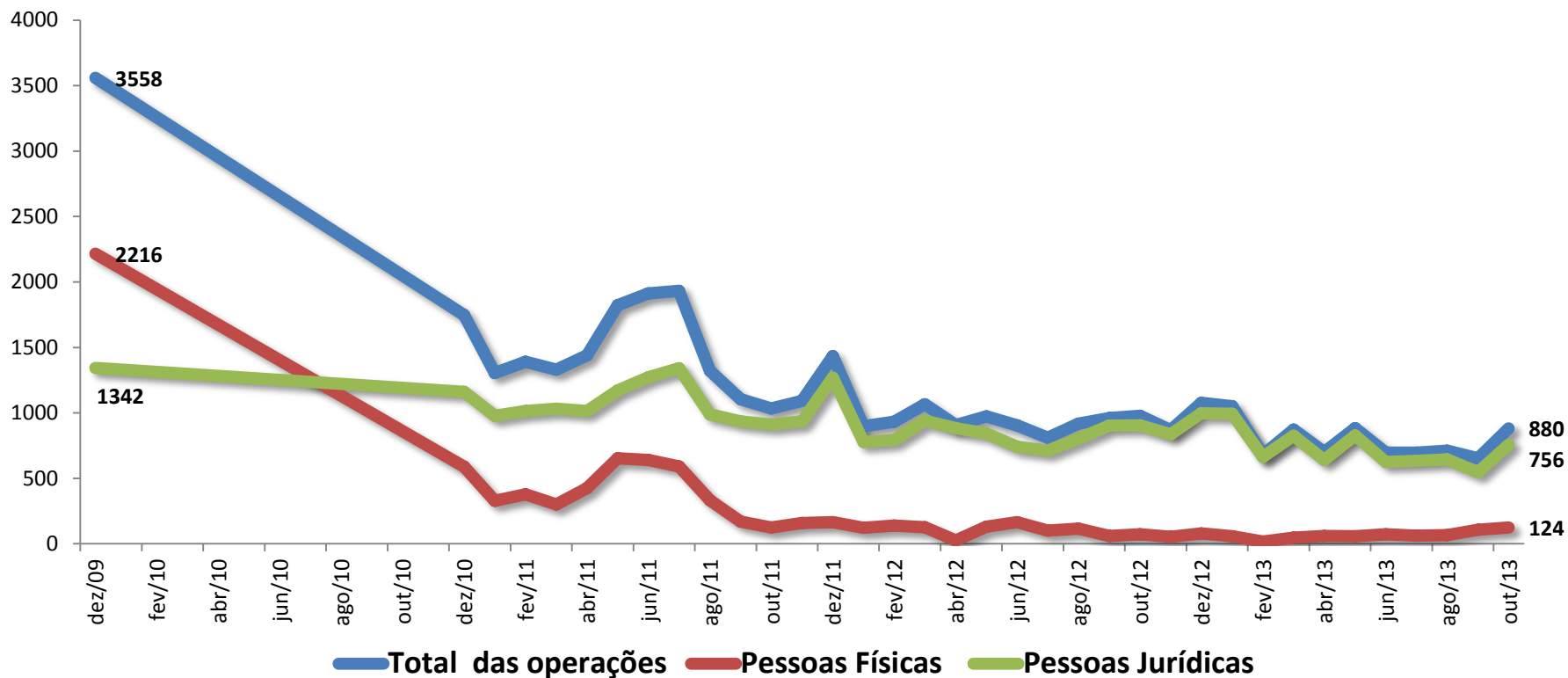


Fonte: BCB

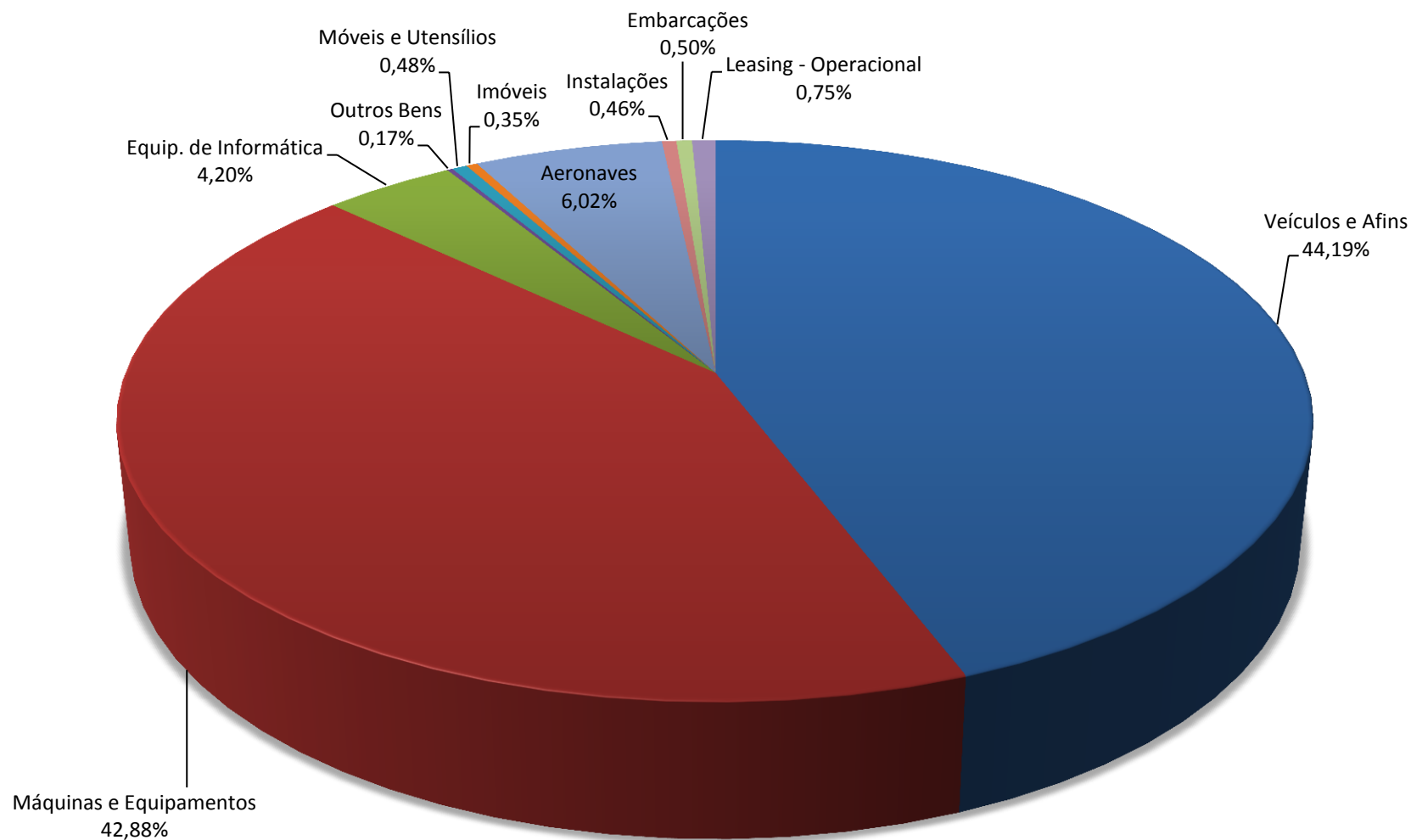
■ Total Cred SFN ■ Veículos - PF ■ Leasing - PF

Evolução dos novos negócios

R\$ milhões

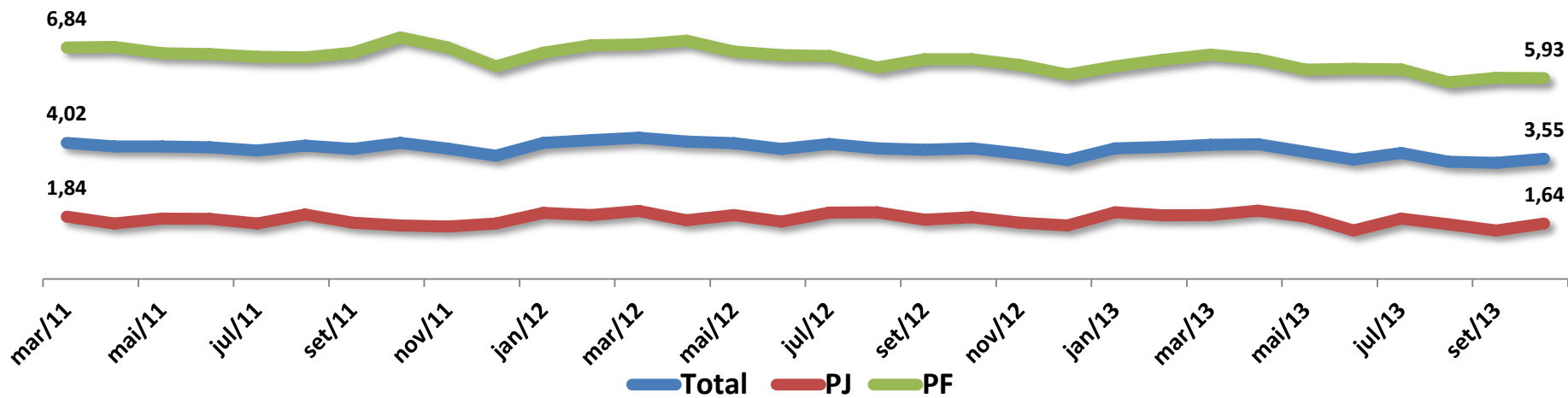


Fonte: Abel - Associação Brasileira das Empresas de Leasing



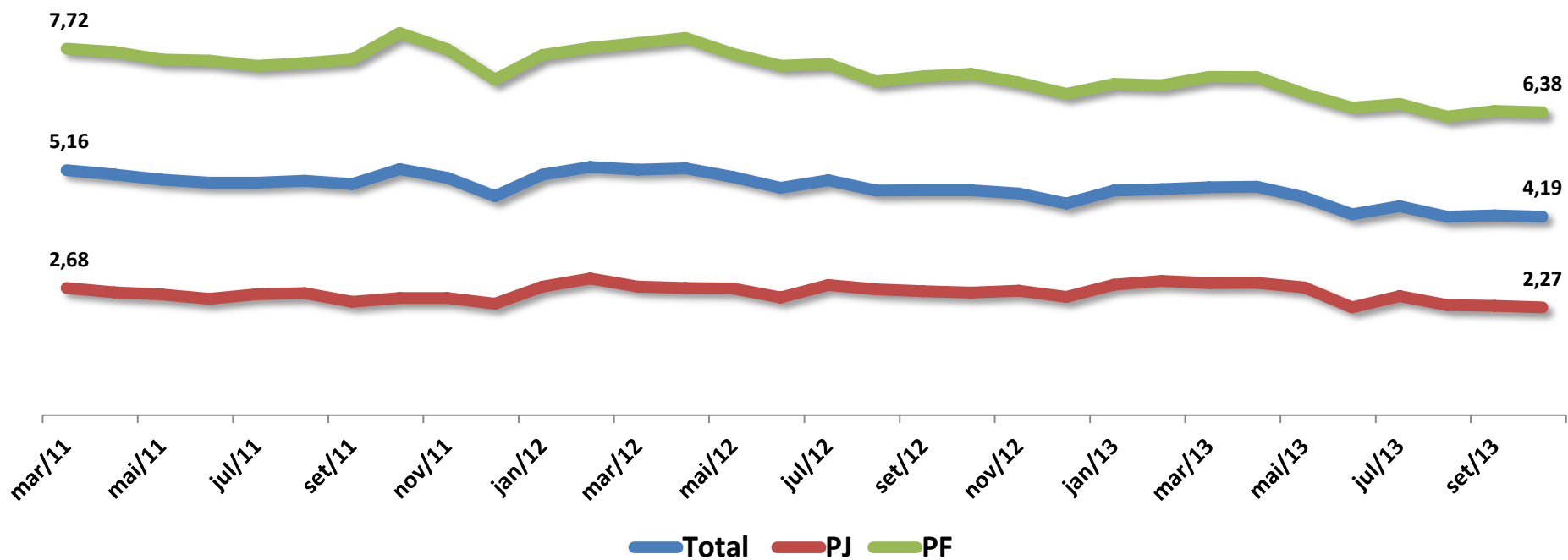
Fonte: Abel - Associação Brasileira das Empresas de Leasing

# Crédito Total - Atrasos de 15 a 90 dias ( % )



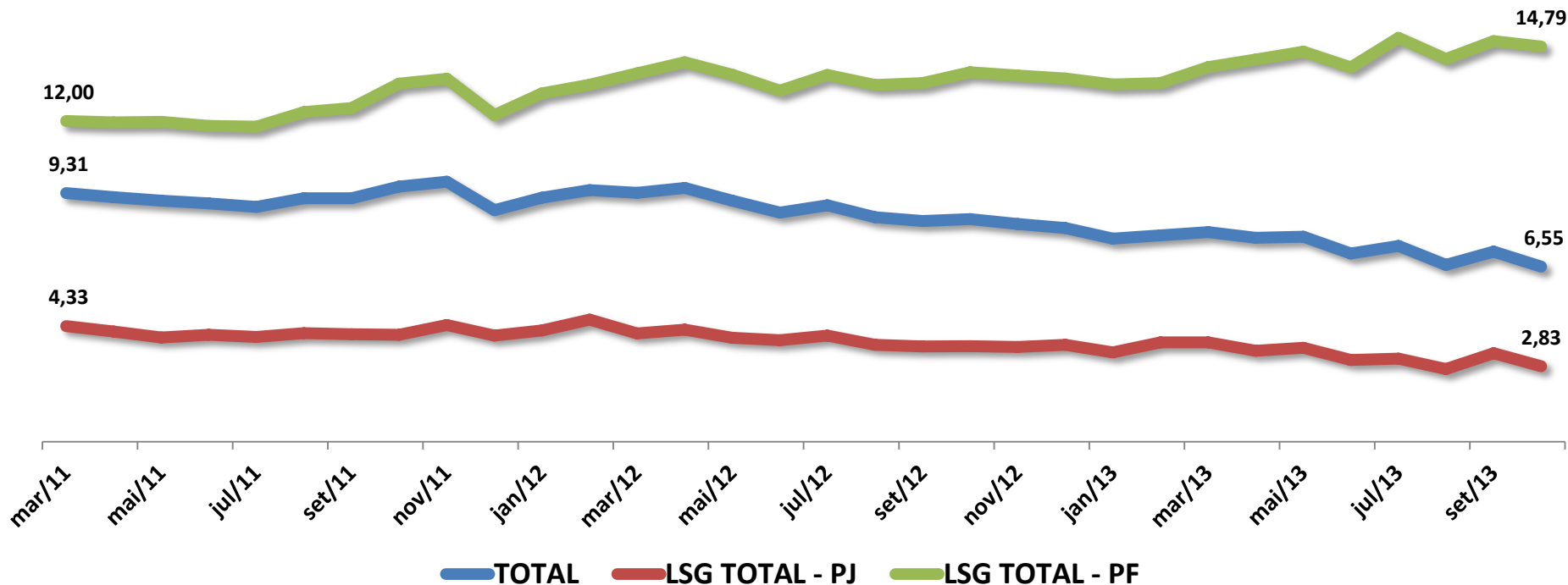
Fonte: BCB

# Crédito Recursos Livres - Atrasos de 15 a 90 dias ( % )



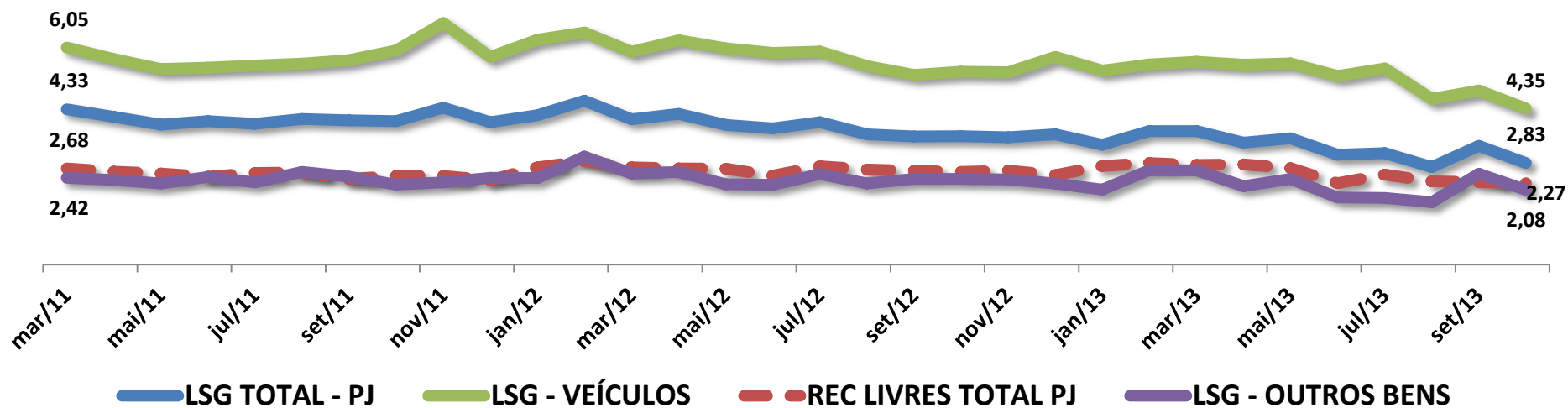
Fonte: BCB

# Leasing Total – atrasos de 15 a 90 dias ( % )



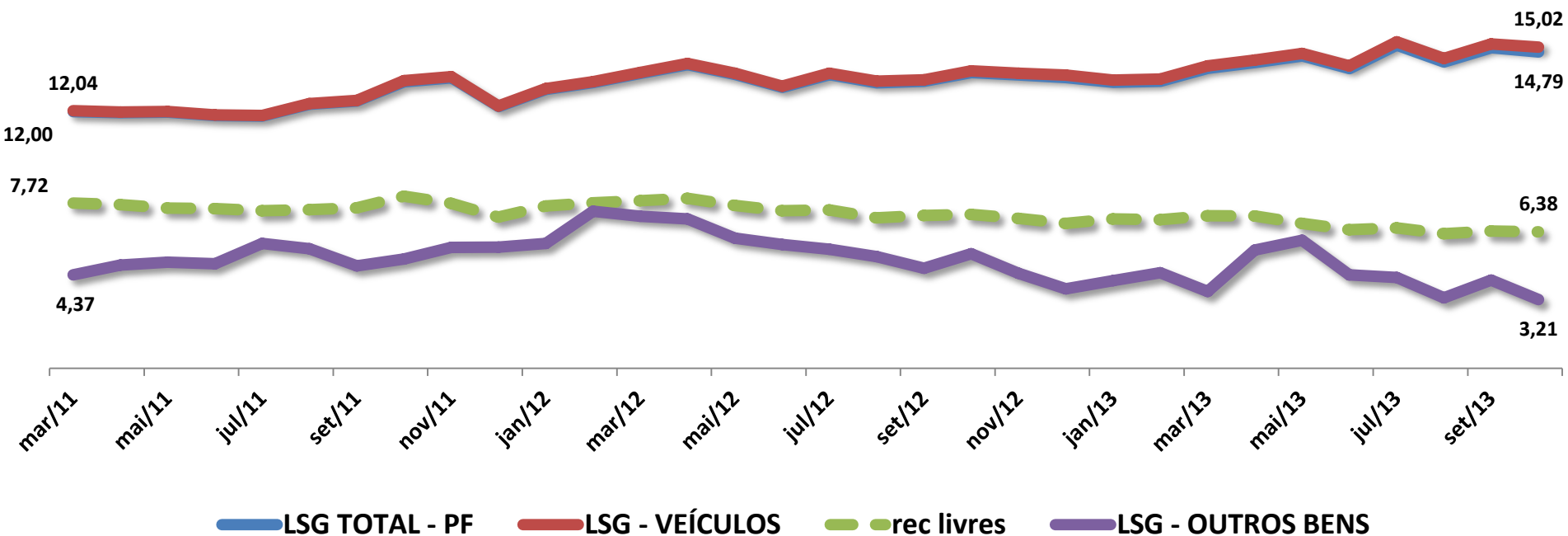
Fonte: BCB

# Leasing Pessoa Jurídica – atrasos de 15 a 90 dias ( % )



Fonte: BCB

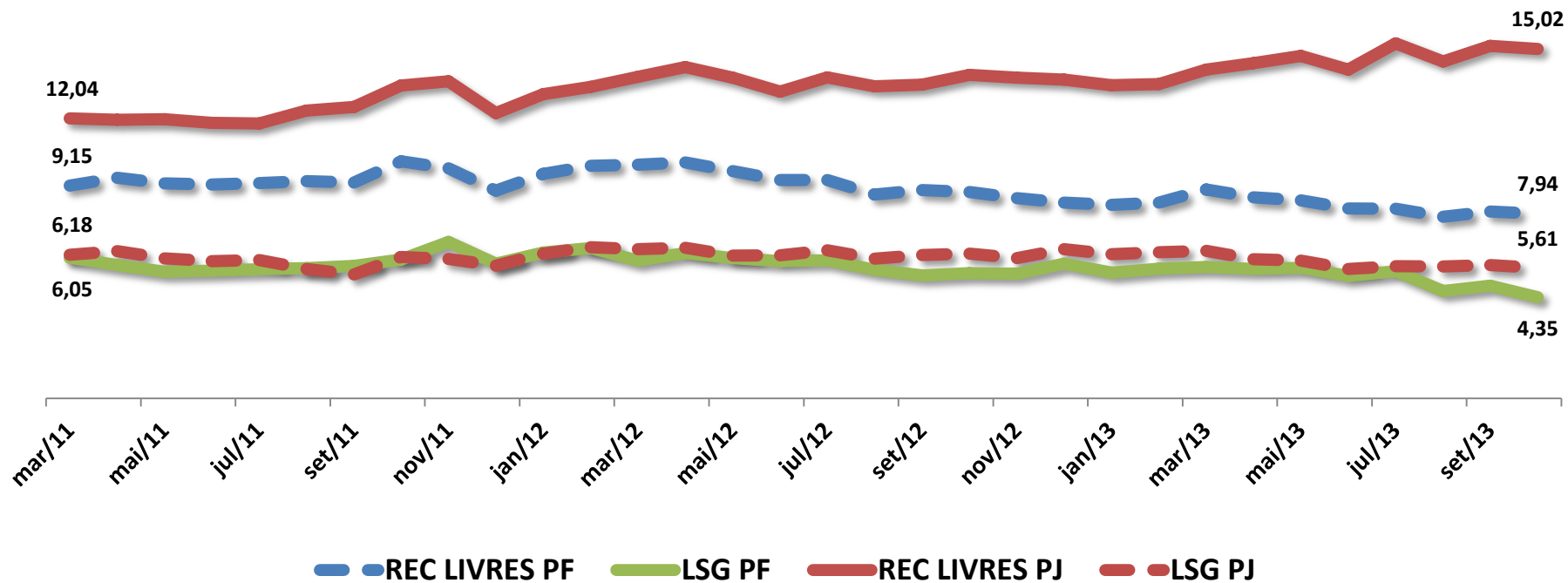
# Leasing Pessoa Física – atrasos de 15 a 90 dias ( % )



Fonte: BCB

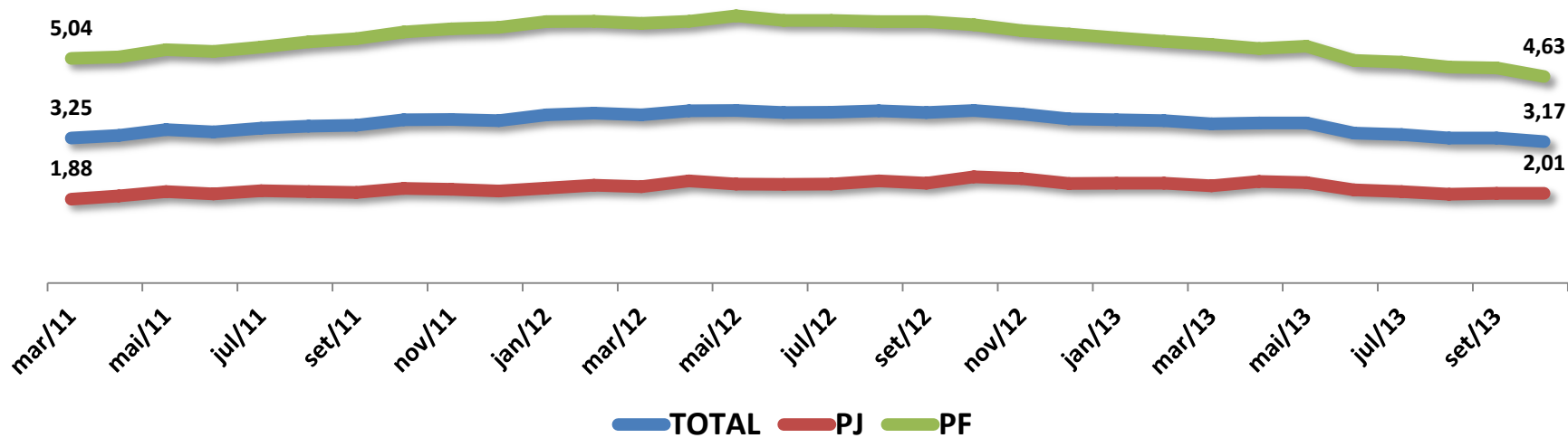


# Veículos – atrasos de 15 a 90 dias ( % )



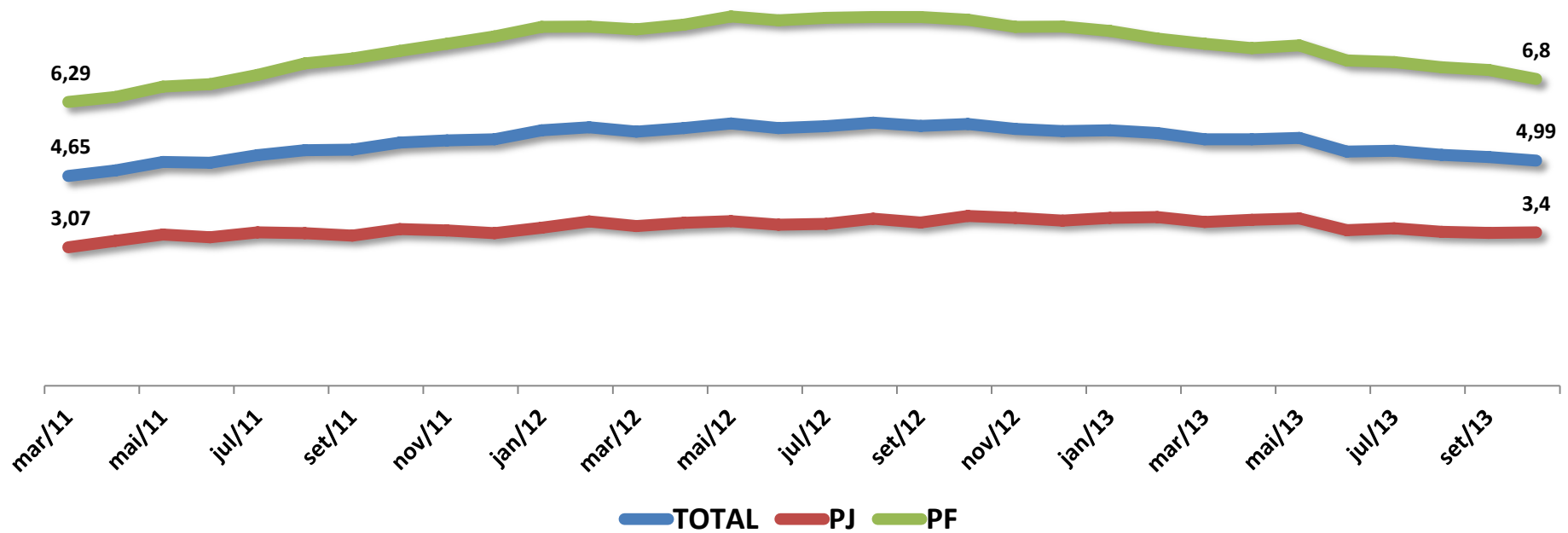
Fonte: BCB

# Crédito Total - Inadimplência acima e 90 dias ( % )



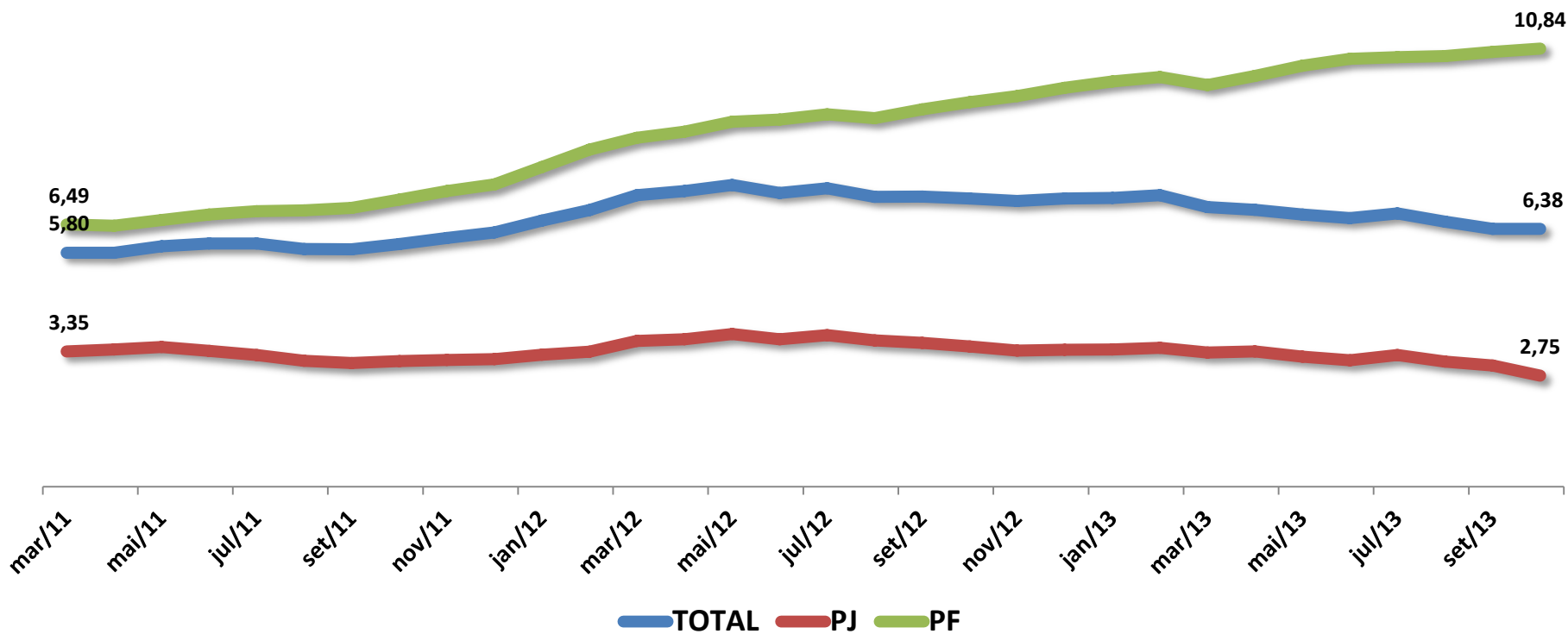
Fonte: BCB

# Crédito Recursos Livres - Inadimplência acima e 90 dias (%)



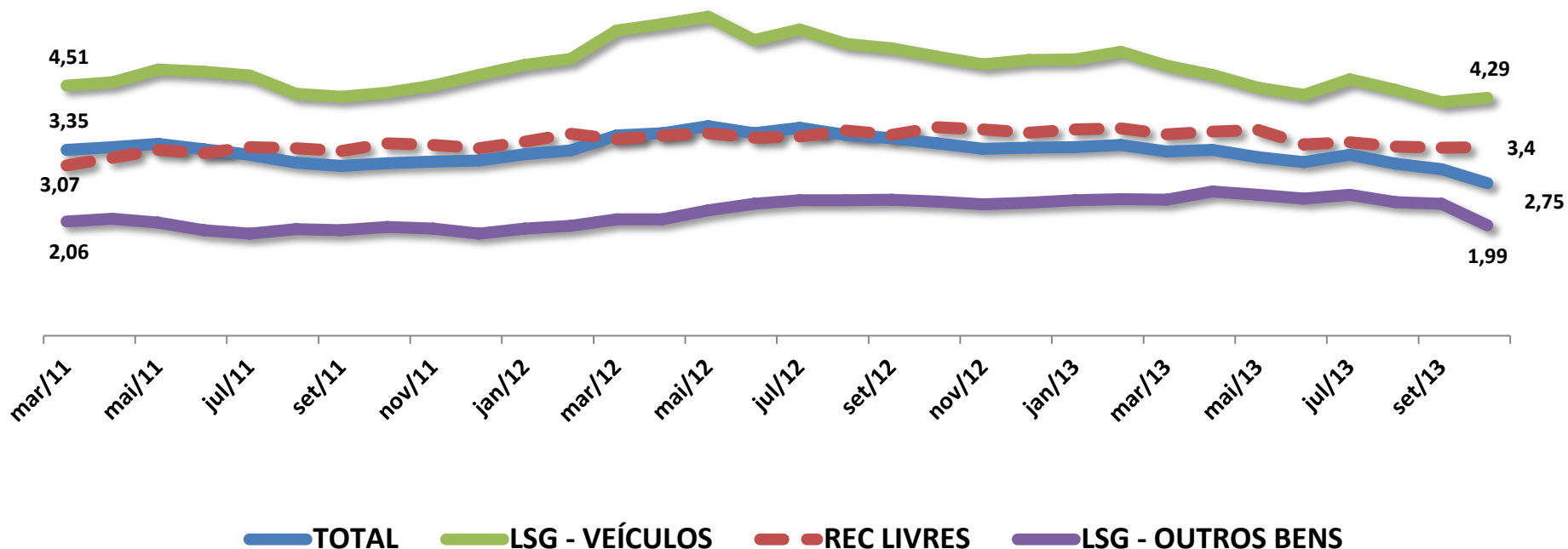
Fonte: BCB

# Leasing Total - Inadimplência acima e 90 dias ( % )



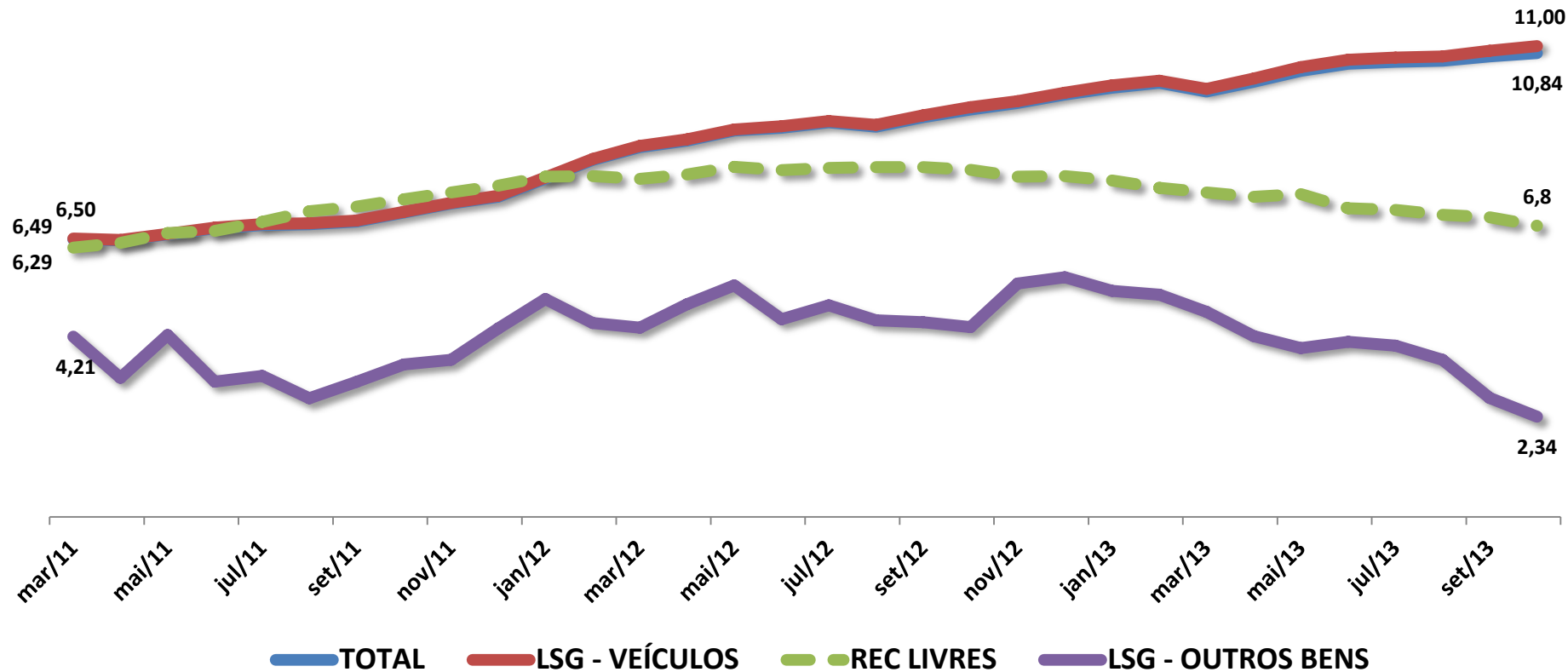
Fonte: BCB

# Leasing Pessoa Jurídica - Inadimplência acima e 90 dias ( % )



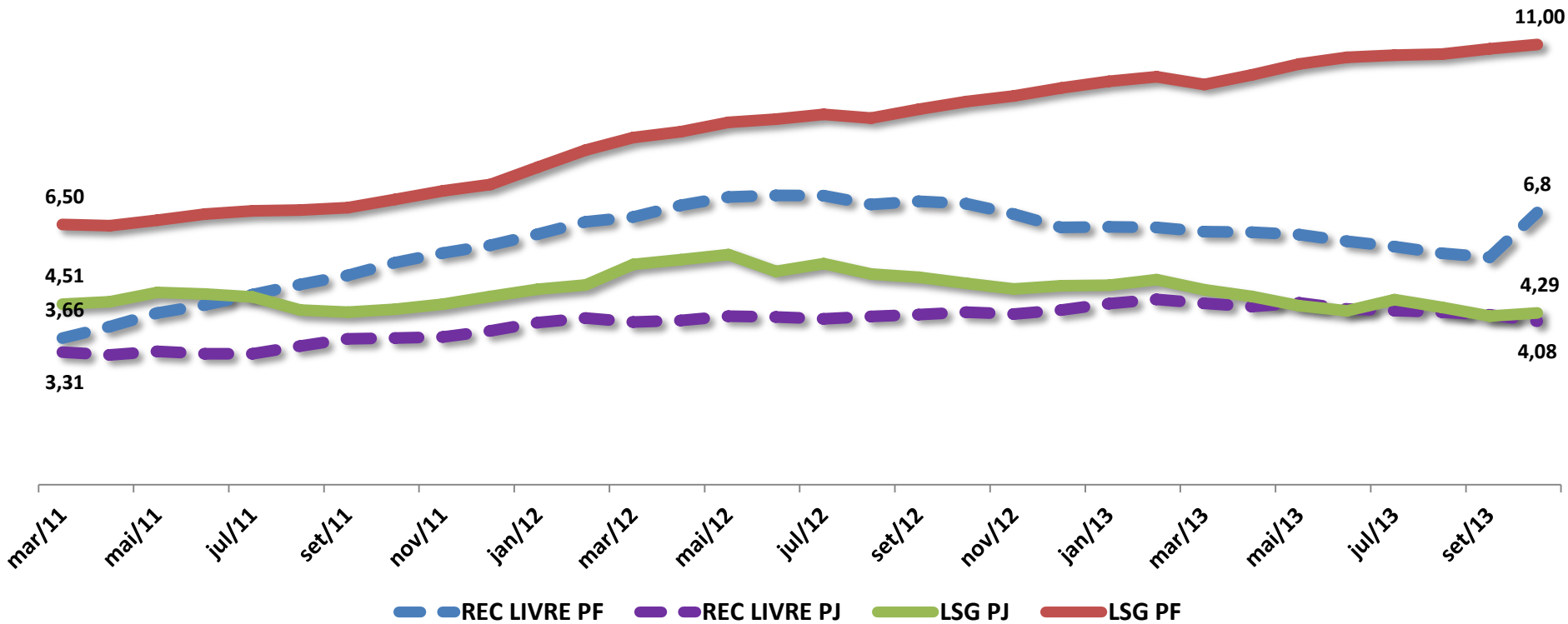
Fonte: BCB

# Leasing Pessoa Física - Inadimplência acima e 90 dias ( % )



Fonte: BCB

# Veículos - Inadimplência acima e 90 dias (%)



Fonte: BCB

## **Contato**

Rua Diogo Moreira, 132

8º andar - conj. 806 - 810

CEP 05423-010 - Pinheiros - São Paulo - SP

Telefone (11) 3095-9100